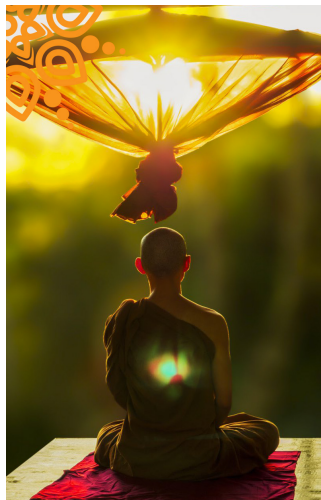


# Chengdu

---

110 [110cities.com/buddhistprayerguide/chengdu](http://110cities.com/buddhistprayerguide/chengdu)



Jan 11

Chengdu is the capital of southwestern China's Sichuan province. Chengdu's history dates to at least the 4th century B.C. It is home to the Giant Panda research center and has a population of 16.5 million.

## The Mianchi Qiang People

---

At one time in history there were 62 unique Qiang tribes. Most of these have been assimilated into larger peoples or have simply vanished. The name "qiang" means herdsmen and for centuries was a generic description for a large number of nomadic tribes.

Today there are nine distinct Qiang languages and groups, all living primarily in Sichuan province. The Mianhi Qiang number around 30,000, with 200 known Jesus followers. Many of these have moved to Wenchuan to avoid persecution in their home areas.

Chengdu is the largest city in Sichuan, with a population of Qiang peoples living in tight knit communities within the city. It is typically young people who move, hoping to find work so they can send money home.



Watch Video At: <https://youtu.be/0n0SE1iwN3A>



## Ways To Pray:

- Pray for 50 Spirit-led multiplying house churches in each of the 19 people groups in this city!
- Pray for a Bible in Mawo and Mianchi Qiang languages.
- Pray for 10,000 missionaries to be sent from this city to the 10/40 window nations.
- Pray for a mighty children's prayer revival in this city.
- Pray for God to bind the spirit of fear and intimidation.